



CAL 8000

NEW

Cellular Analysis Line

Smarter workstation, Simpler workflow

mindray

healthcare within reach

Smarter workstation Simpler workflow





CAL 8000

Cellular Analysis Line

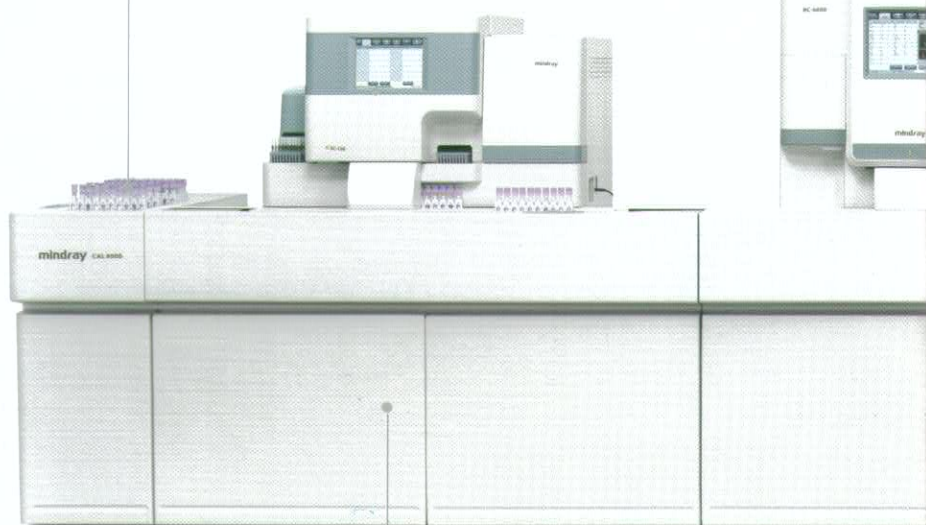


Re-exam: transport the samples that require blood smears, as per the pre-defined re-exam criteria



The unloading area can hold up to 200 sample tubes at a time. From here the users could select the sample tubes which need further analysis.

The re-exam criteria on CAL 8000 could be defined by many conditions, such as time, patient age, gender, department, etc. This can minimize the number of blood smears.



Mindray provides original slides to ensure quality of blood smears and reliable performance of SC-120.



Mindray provides original stains as well as buffer fluid to ensure high quality of staining.



Repeat: repeat the previous test (in case of some system errors)
Rerun: keep the previous test result, and rerun the sample in same test mode (for suspect results)

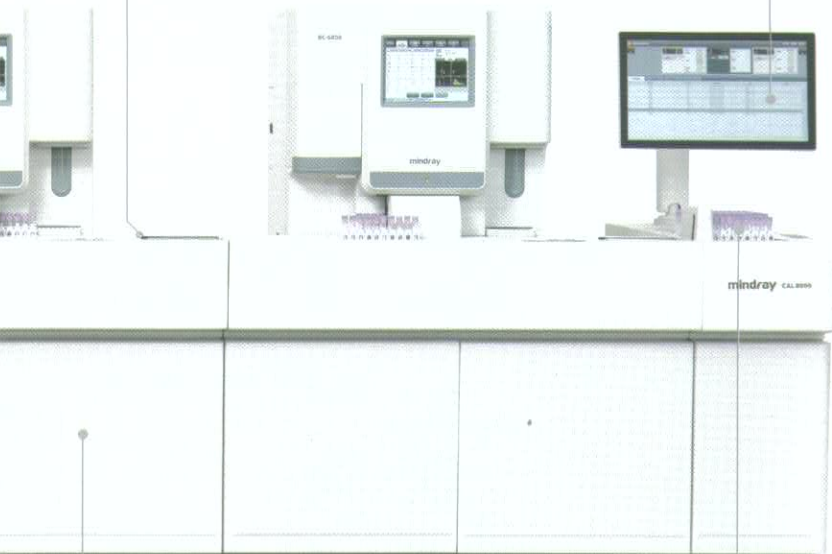


Reflex: add some test items such as "NRBC" or "PLT-O" (in case of suspected results for the parameters)

The CAL 8000 can automatically distribute the samples with "Repeat", "Rerun" and "Reflex" criteria which are pre-defined by users.



The touch screen is the "brain" of CAL 8000. It optimizes the distribution of workload between each BC-6800 unit and decides which sample requires a blood smear. It displays the status of each BC-6800 or SC-120 installed on CAL 8000 as well as the volume of balance reagent. This intuitive software could tell the users all necessary information of CAL 8000 at any given time. Consequently, the users can spend less time operating CAL 8000 and arrange their working schedule better.



The loading area can hold up to 200 sample tubes at a time. The STAT position provides an option for a faster blood count. The whole CAL 8000 can be started by just pressing one button.



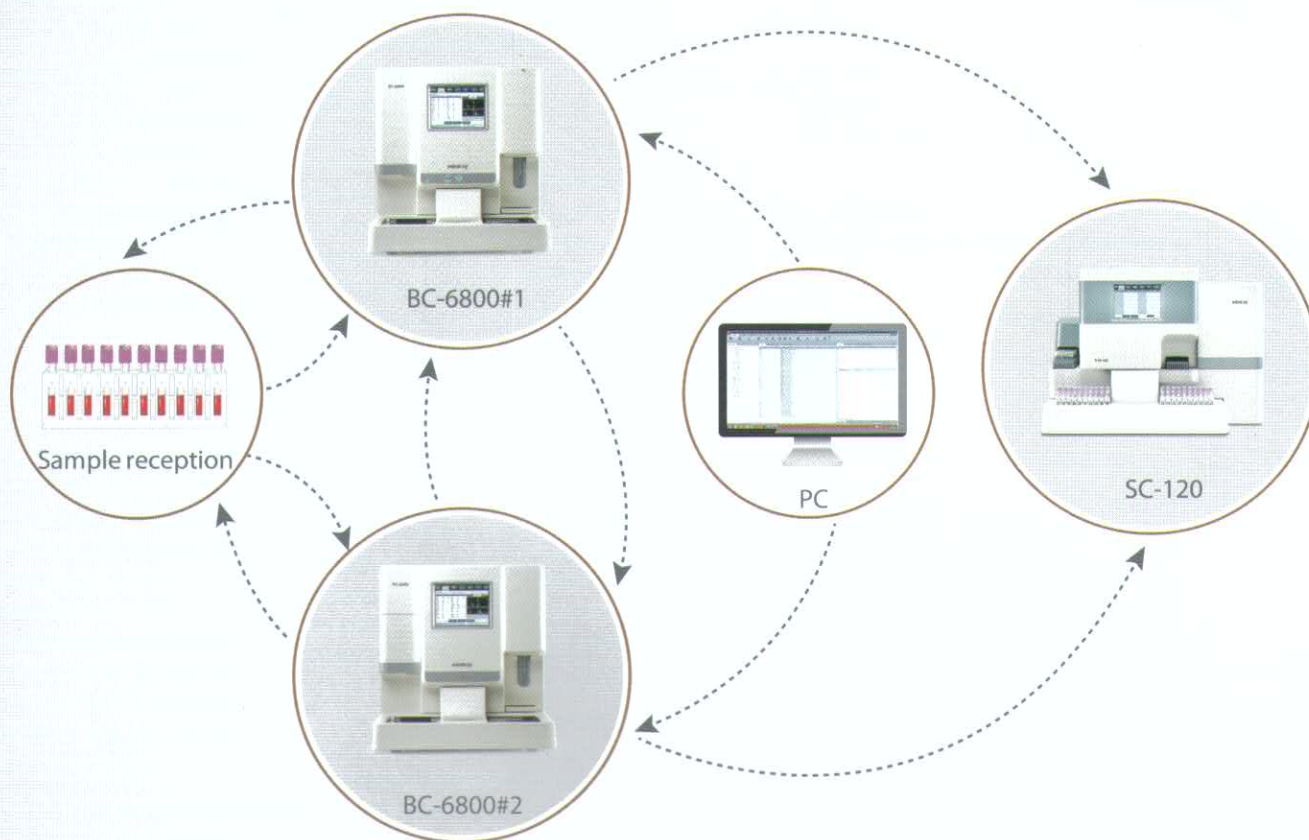
All reagents as well as the pneumatic unit could be set in the trolley below respective BC-6800 or SC-120. In this manner, the reagents and pneumatic unit could be well organized permitting easy reagent replacement.



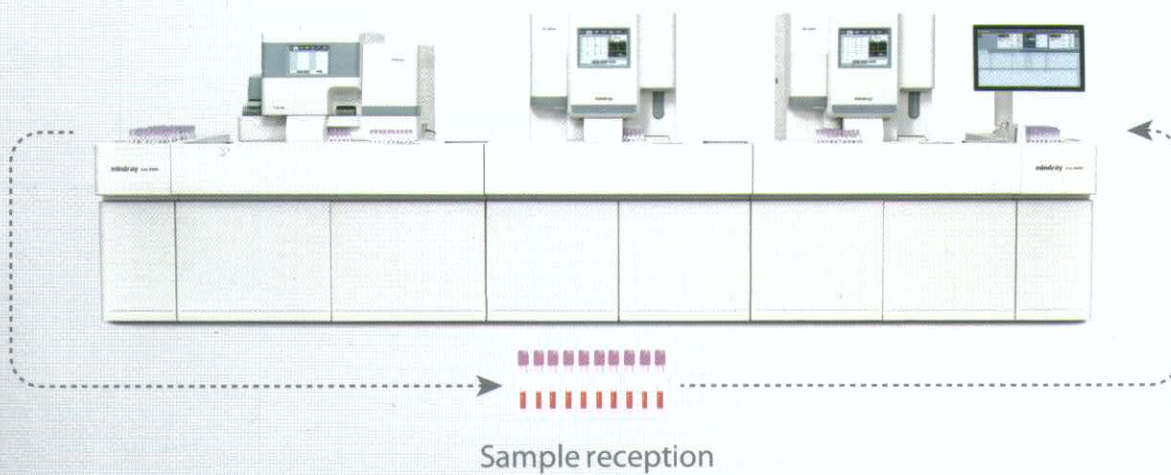
The special tube racks utilize different barcodes to differentiate specific usages, such as "QC", "Slide making & staining only" and "RET test only". The special tube racks could carry the tubes to perform these specific functions through the simplest way.

Simpler workflow

The workflow without CAL 8000



The workflow with CAL 8000



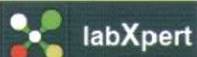
The CAL 8000's on-board management software can help users organize their working hours better because it displays:

- The working status of each BC-6800 and SC-120
- The working status of the track
- The reagent monitoring including dead volume, number of tests left, expiration date, etc.



The LabXpert software optimizes following functions to simplify your work flow for data analysis:

- Improved re-exam criteria function with multi-conditions setup
- Auto-validation for normal samples
- More intuitive interface to review and validate pathological samples

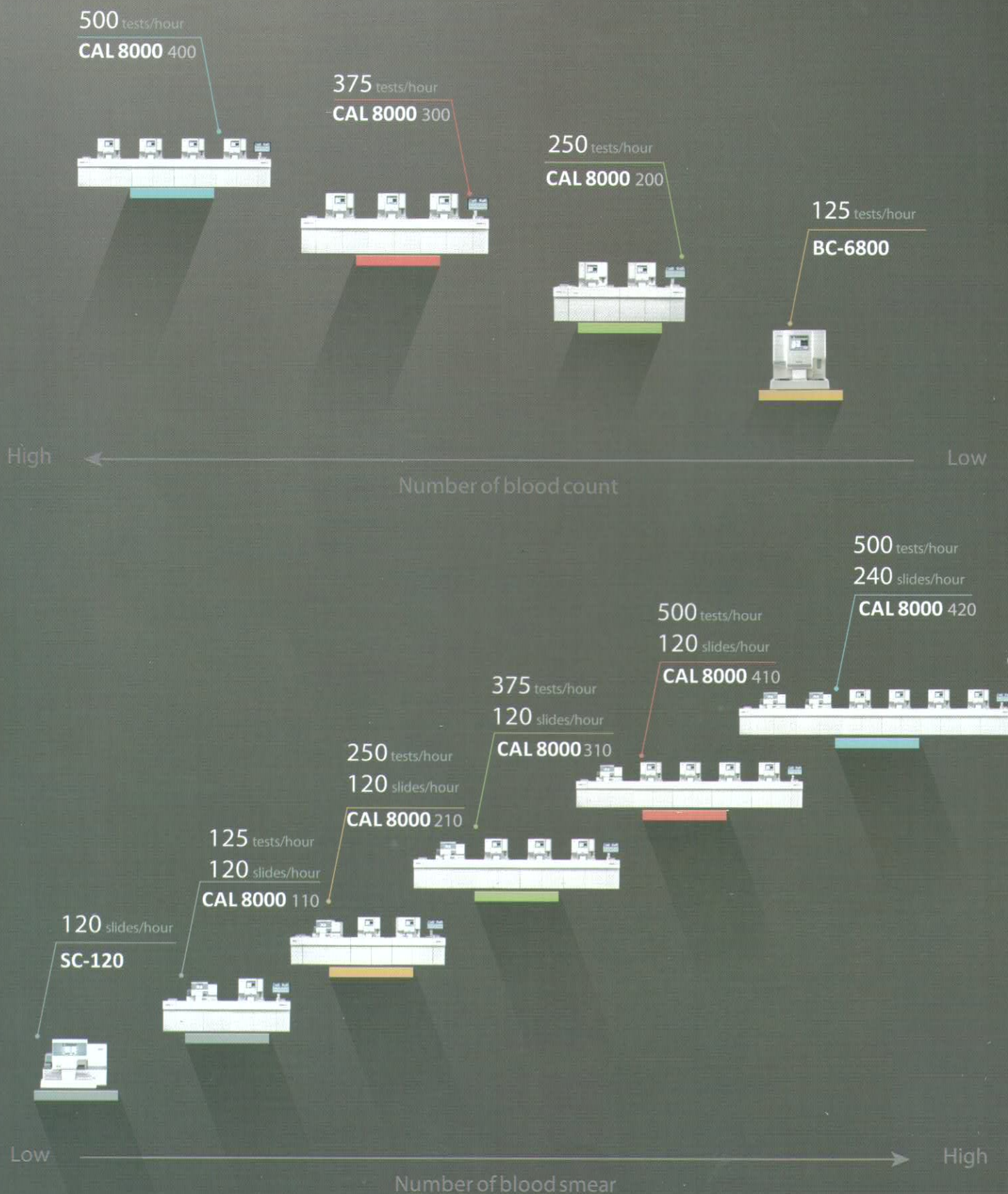


LabXpert

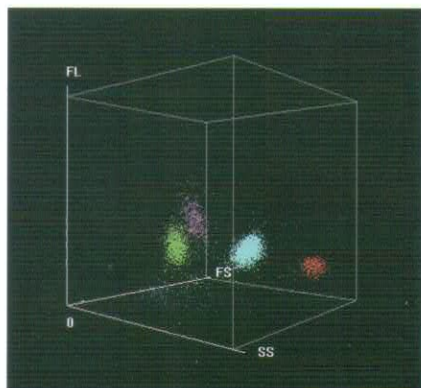
Your Expert in Lab for Data Analysis



Adaptive solutions



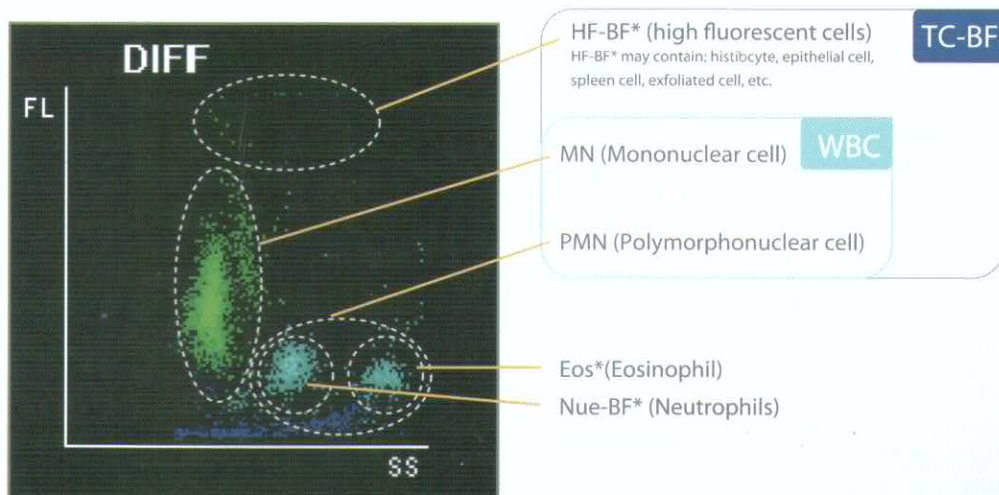
Less blood smears



BC-6800 utilizes the Mindray's unique SF Cube to analyze blood cells. With 2 angles of laser signal and 1 angle of fluorescent signal, BC-6800 can construct a 3D scattergram which can make bigger distance between each cluster of blood cells, this ensures a more accurate results. Additionally, the 3D scattergram could provide more accurate flags for pathological samples, that means less false positive and false negative rates. As a result, the number of blood smears requiring microscopic review will be lower.

With the SF Cube technology, BC-6800 can provide the advanced parameters from mature to immature blood cells.

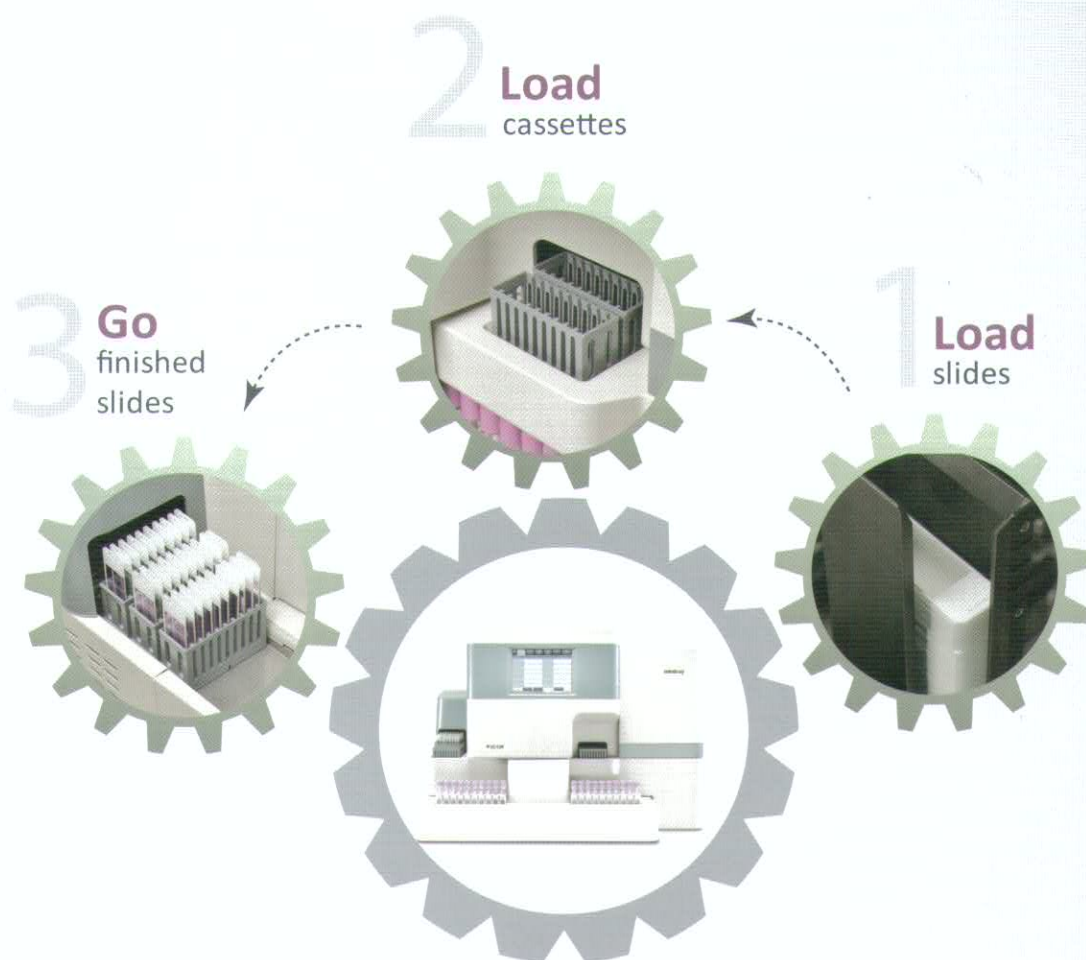
- Leukopoietic markers: Immature granulocytes (IMG) with every CBC+DIFF count
- Erythropoietic markers : Reticulocyte(RET), Immature reticulocyte fraction (IRF), Reticulocyte Hemoglobin Expression (RHE), Nucleated RBC (NRBC)
- Thrombopoietic markers : Immature platelet fraction (IPF) and a fluorescent plus optical platelet count (PLT-O) designed for testing thrombocytopenia samples as well as cases of interference in PLT counting by impedance method
- Body fluid analysis: WBC 2-part diff with more research parameters



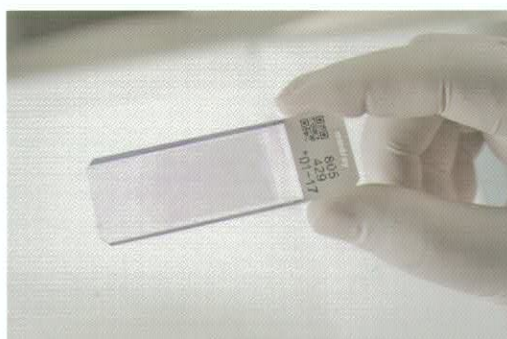
BC-6800 can analyze CSF and serous fluid samples to provide reportable parameters for RBC, WBC, WBC differential (polymorphonuclear & mononuclear) and total cell count (TC-BF).

1, 2, 3
Load & Go





Just by following simple 3 steps of 'load and go', operators of SC-120 slide maker & stainer are able to obtain finished slides - which are ready for microscopic review. Up to 180 blank slides can be loaded at a time and 10 cassettes which can hold 10 slides each can be loaded at a time. SC-120 can prepare and stain up to 120 slides in one hour.



The SC-120 can make smear from capillary samples as it requires only 40µL blood.

CAL 8000

Cellular Analysis Line



CAL 8000 200

Width(mm)	Depth(mm)	Height(mm)	Weight(kg)
3263	1025	1472	696



CAL 8000 300

Width(mm)	Depth(mm)	Height(mm)	Weight(kg)
4449	1025	1472	961



CAL 8000 400

Width(mm)	Depth(mm)	Height(mm)	Weight(kg)
5635	1025	1472	1227



CAL 8000 110

Width(mm)	Depth(mm)	Height(mm)	Weight(kg)
3263	1120	1472	791



CAL 8000 210

Width(mm)	Depth(mm)	Height(mm)	Weight(kg)
4449	1120	1472	1056



CAL 8000 310

Width(mm)	Depth(mm)	Height(mm)	Weight(kg)
5635	1120	1472	1322



CAL 8000 410

Width(mm)	Depth(mm)	Height(mm)	Weight(kg)
6821	1120	1472	1587



CAL 8000 420

Width(mm)	Depth(mm)	Height(mm)	Weight(kg)
8167	1120	1472	1966

Mindray Building, Keji 12th Road South,
High-tech Industrial Park, Nanshan, Shenzhen 518057, P.R. China
Tel: +86 755 8188 8998 Fax: +86 755 26582680
E-mail: intl-market@mindray.com www.mindray.com
Mindray is listed on the NYSE under the symbol "MR"

mindray are registered trademarks or trademarks owned by Shenzhen Mindray Bio-medical Electronics Co., LTD.
© 2014 Shenzhen Mindray Bio-Medical Electronics Co., Ltd. All rights reserved. Specifications subject to changes without prior notice.
P/N:ENG-CAL 8000-210285x8-20140312

mindray